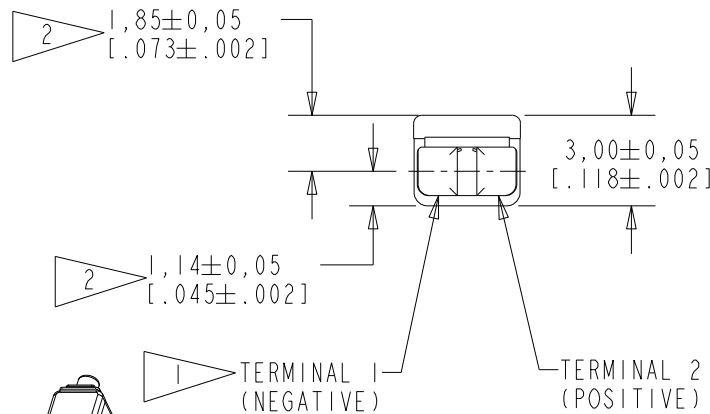
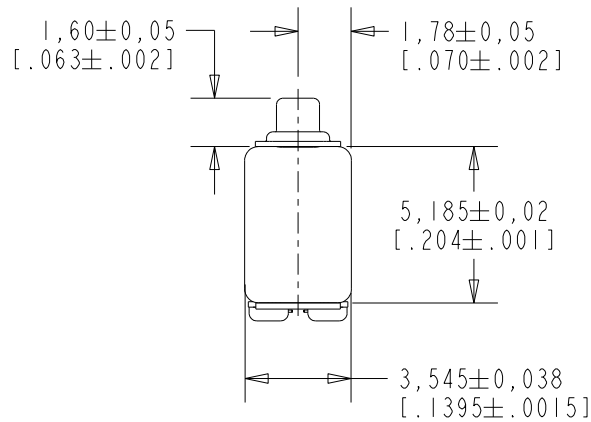


EH-27318-000

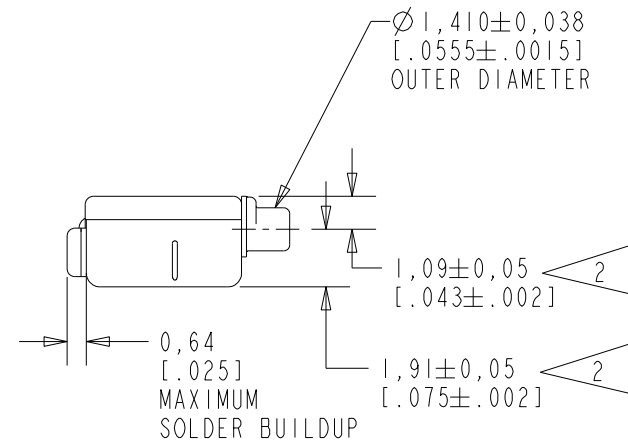
SHT 1.1

NOTES:

- 1 A POSITIVE GOING VOLTAGE AT TERMINAL 2, RELATIVE TO TERMINAL 1, CAUSES A DECREASE IN PRESSURE AT THE SOUND OUTLET.
- 2 LOCATED FROM TWO SURFACES FOR CUSTOMER CONVENIENCE. ONLY APPLICABLE FROM ONE SURFACE, NOT TO BE USED TOGETHER. HORIZONTAL LOCATION FOR TERMINAL CENTERED TO $\pm 0,17$ [0.007].



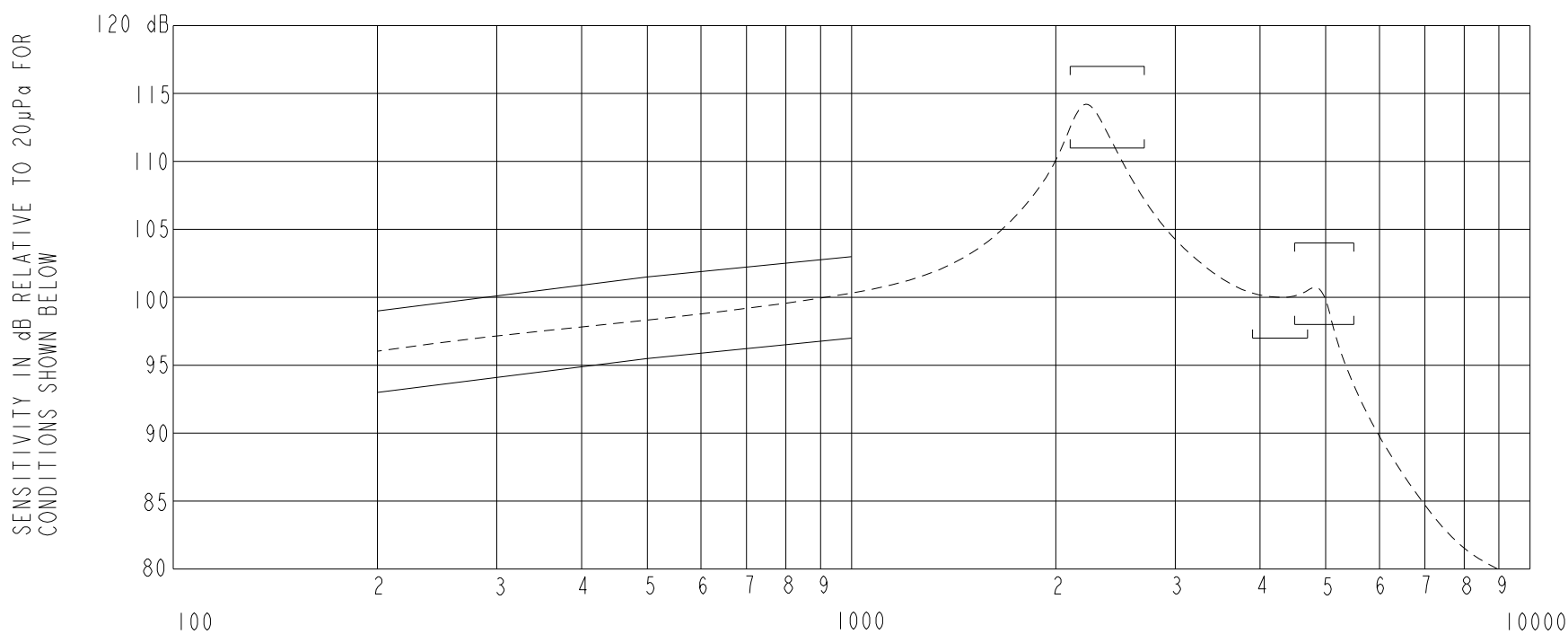
SCALE 2:1
 NOMINAL WEIGHT
 .23 GRAMS DIMENSIONS IN MILLIMETERS [INCHES]



Revision	C.O. #	Implementation Date	RELEASE LEVEL	REVISION
C	PI0000990	11-25-16	Active	C
B	CI0108596	12-24-08		
A	CI0103383	11-12-05		

SCALE: 4:1		DR. BY: AB	DATE: 11-12-05
DO NOT SCALE DRAWING			
TITLE: RECEIVER	EH-27318-000	GJP	11-21-05
OUTLINE DRAWING	SHT 1.1	GJP	11-21-05

KNOWLES CORPORATION



NOTES:

FREQUENCY IN HERTZ

1. MEASUREMENTS MADE USING 10mm (.394") OF 1mm (.039") ID TUBE CONNECTED TO A SIMULATED ANSI S3.3-1960 TYPE HA-3 (IEC 60318-5).

FREQUENCY	SENSITIVITY	
	MIN.	MAX.
200	93.0	99.0
500	95.5	101.5
1000	97.0	103.0
2100-2700	111.0	117.0
3900-4700	97.0	---
4500-5500	98.0	104.0

3. RESPONSE, IMPEDANCE, AND DISTORTION MEASUREMENTS MADE USING THE ELECTRICAL TEST CONDITIONS SHOWN BELOW.
4. ELECTRICAL SOURCE IMPEDANCE MUST BE GREATER THAN 20 TIMES 1KHz IMPEDANCE FOR TEST CONDITIONS SHOWN BELOW.
5. INDIVIDUAL SPECIFICATIONS.

PORT LOCATION	IMPEDANCE OHMS ±15%		DCR @20°C OHMS ±10%	DISTORTION		ELECTRICAL TEST CONDITIONS	
	1KHz	500Hz		MAX. %	FREQ Hz	AC mA RMS	DC mA
12C	195	115	68	10	800	1.63	0.0

Revision	C.O. #	Implementation Date	RELEASE LEVEL	REVISION
C	PI0000990	11-25-16	Active	C
B	CI0108596	12-24-08		
A	CI0103383	11-12-05		

KNOWLES CORPORATION

WHEN TEST LIMITS ARE USED TO ESTABLISH INCOMING INSPECTION ACCEPTANCE/REJECTION CRITERIA, CORRELATION OF TEST EQUIPMENT WITH KNOWLES IS ALSO REQUIRED FOR ELIMINATION OF EQUIPMENT AND TEST METHOD VARIATION

TITLE: RECEIVER
PERFORMANCE SPECIFICATION

EH-27318-000
SHT 2.1

DR. BY	DATE
AB	11-12-05
CK. BY	DATE
GJP	11-21-05
APP. BY	DATE
GJP	11-21-05